

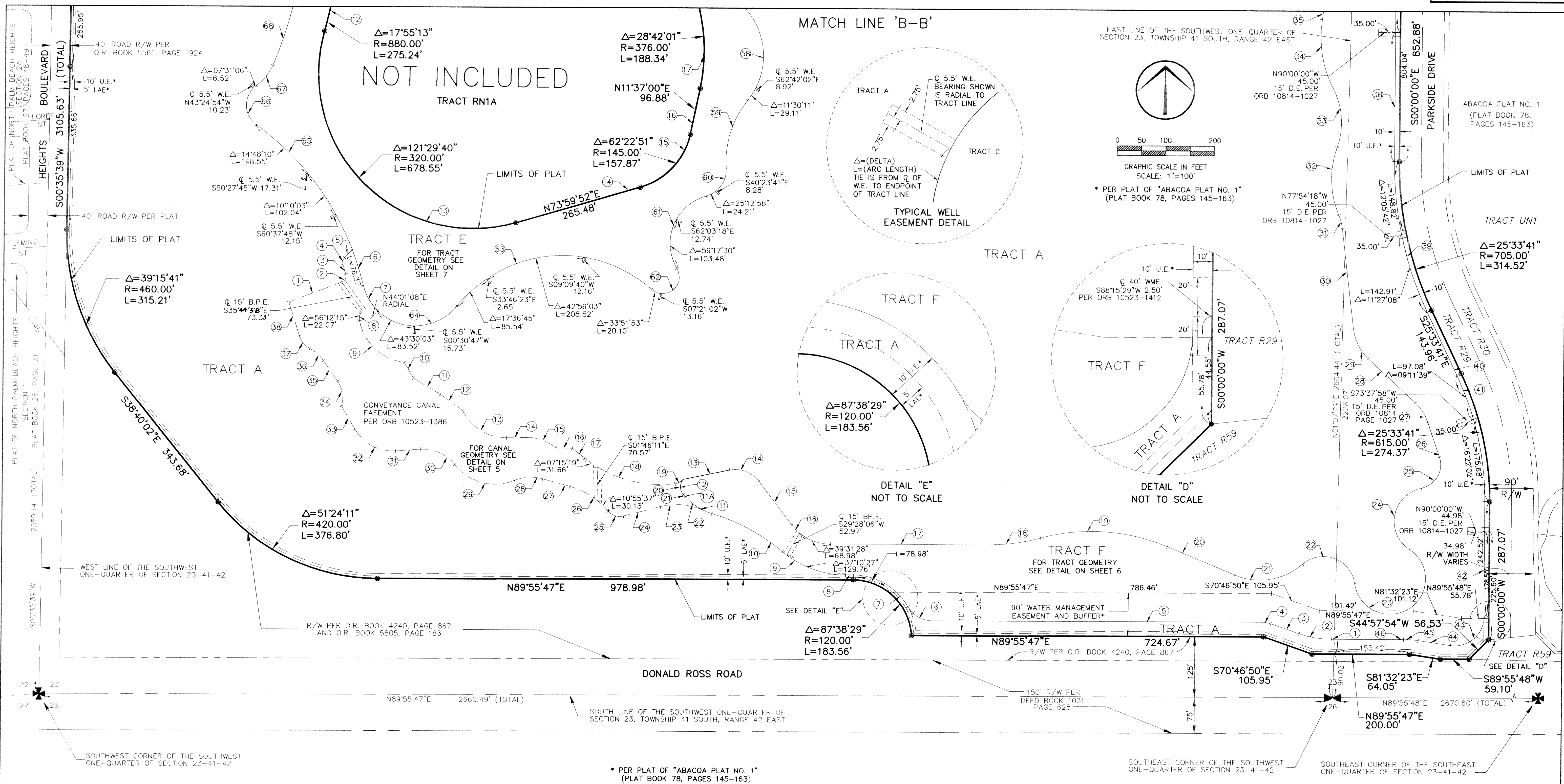
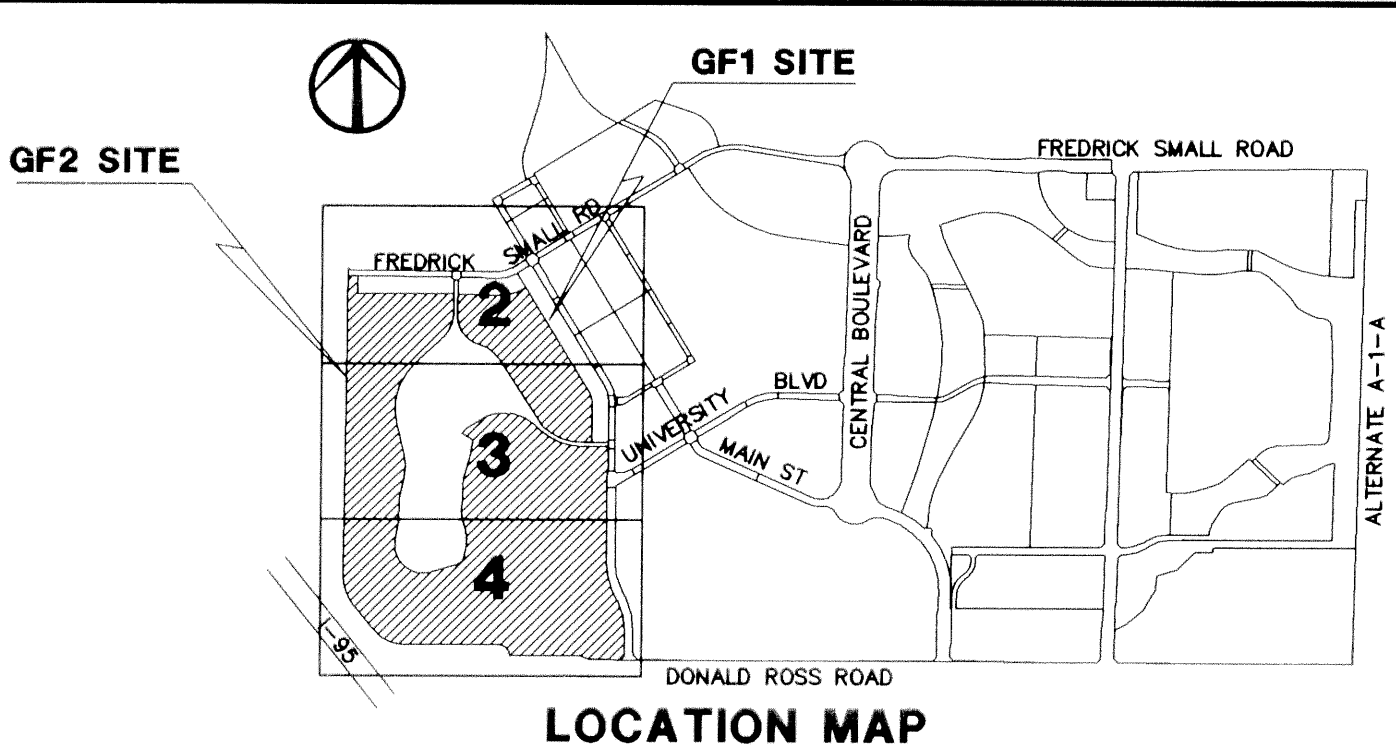
# ABACOA-A REPLAT OF TRACTS GF1 AND GF2

A REPLAT OF ALL OF TRACTS GF1 AND GF2 OF ABACOA PLAT NO. 1, AS RECORDED IN PLAT BOOK 78, PAGES 145 THROUGH 163, INCLUSIVE, LYING IN SECTION 23, TOWNSHIP 41 SOUTH, RANGE 42 EAST, TOWN OF JUPITER, PALM BEACH COUNTY, FLORIDA

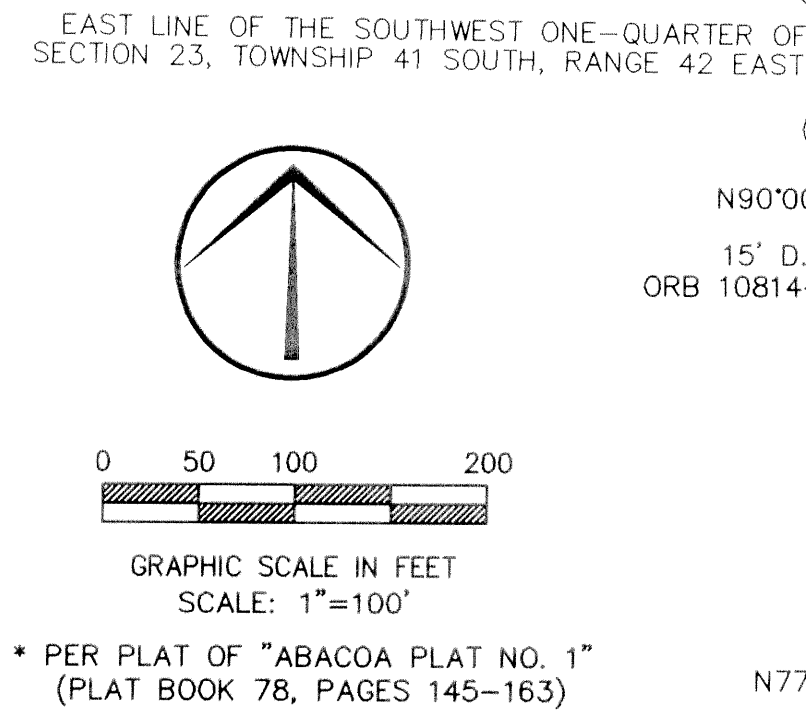
MARCH, 1999

THIS INSTRUMENT PREPARED BY JAMES E. PARK, P.S.M.  
 WILLIAMS, HATFIELD & STONER, INC. - ENGINEERS PLANNERS SURVEYORS  
 1901 SOUTH CONGRESS AVENUE, SUITE 150, BOYNTON BEACH, FLORIDA 33426

SHEET 4 OF 7



\* PER PLAT OF "ABACOA PLAT NO. 1" (PLAT BOOK 78, PAGES 145-163)



\* PER PLAT OF "ABACOA PLAT NO. 1" (PLAT BOOK 78, PAGES 145-163)